
AIMMS Tutorial for Beginners - Entering and Saving the Data

This file contains only one chapter of the book. For a free download of the complete book in pdf format, please visit www.aimms.com

Copyright © 1993–2011 by Paragon Decision Technology B.V. All rights reserved.

Paragon Decision Technology B.V.	Paragon Decision Technology Inc.	Paragon Decision Technology Pte.
Schipholweg 1	500 108th Avenue NE	Ltd.
2034 LS Haarlem	Ste. # 1085	80 Raffles Place
The Netherlands	Bellevue, WA 98004	UOB Plaza 1, Level 36-01
Tel.: +31 23 5511512	USA	Singapore 048624
Fax: +31 23 5511517	Tel.: +1 425 458 4024	Tel.: +65 9640 4182
	Fax: +1 425 458 4025	

Email: info@aimms.com
WWW: www.aimms.com

ISBN xx-xxxxxx-x-x

AIMMS is a registered trademark of Paragon Decision Technology B.V. IBM ILOG CPLEX and sc CPLEX is a registered trademark of IBM Corporation. GUROBI is a registered trademark of Gurobi Optimization, Inc. KNITRO is a registered trademark of Ziena Optimization, Inc. XPRESS-MP is a registered trademark of FICO Fair Isaac Corporation. MOSEK is a registered trademark of Mosek ApS. WINDOWS and EXCEL are registered trademarks of Microsoft Corporation. T_EX, L^AT_EX, and A_MS-L^AT_EX are trademarks of the American Mathematical Society. LUCIDA is a registered trademark of Bigelow & Holmes Inc. ACROBAT is a registered trademark of Adobe Systems Inc. Other brands and their products are trademarks of their respective holders.

Information in this document is subject to change without notice and does not represent a commitment on the part of Paragon Decision Technology B.V. The software described in this document is furnished under a license agreement and may only be used and copied in accordance with the terms of the agreement. The documentation may not, in whole or in part, be copied, photocopied, reproduced, translated, or reduced to any electronic medium or machine-readable form without prior consent, in writing, from Paragon Decision Technology B.V.

Paragon Decision Technology B.V. makes no representation or warranty with respect to the adequacy of this documentation or the programs which it describes for any particular purpose or with respect to its adequacy to produce any particular result. In no event shall Paragon Decision Technology B.V., its employees, its contractors or the authors of this documentation be liable for special, direct, indirect or consequential damages, losses, costs, charges, claims, demands, or claims for lost profits, fees or expenses of any nature or kind.

In addition to the foregoing, users should recognize that all complex software systems and their documentation contain errors and omissions. The authors, Paragon Decision Technology B.V. and its employees, and its contractors shall not be responsible under any circumstances for providing information or corrections to errors and omissions discovered at any time in this book or the software it describes, whether or not they are aware of the errors or omissions. The authors, Paragon Decision Technology B.V. and its employees, and its contractors do not recommend the use of the software described in this book for applications in which errors or omissions could threaten life, injury or significant loss.

This documentation was typeset by Paragon Decision Technology B.V. using L^AT_EX and the LUCIDA font family.

Chapter 4

Entering and Saving the Data


4.1 Entering set data

Since this tutorial only contains little data, you are asked to enter it manually. (In the tutorial for professionals, data is imported from a database.) In this section you will encounter a standard data entry facility. Each identifier has an associated data page that you can use both to view data and to enter data.

Manual data entry

To enter the two elements of the set 'Plants', you should execute the following actions:

Elements of the set 'Plants'

- ▶ open the attribute form of the set 'Plants',
- ▶ press the **Data** button ,
- ▶ move the mouse pointer to the data page as shown in Figure 4.1, and click in the empty edit field at the top of the data page,
- ▶ enter 'Haarlem' as the first element of the set,
- ▶ press the *Enter* key to register this element,
- ▶ enter 'Eindhoven' as the second element of the set,
- ▶ press the *Enter* key to register this element, and
- ▶ close the data page by clicking *Close* button (the data changes are immediately committed).

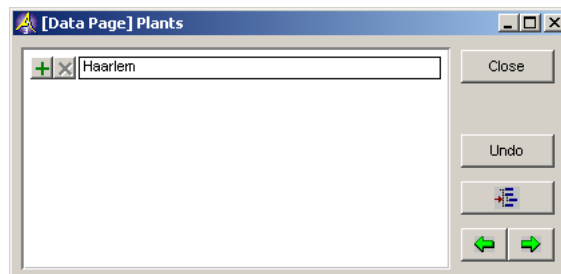


Figure 4.1: Data page for the set 'Plants'

To change the name of an element, just, select the element, press the delete button and enter the modified name in the same way as described above.

Changing element names

The elements of the set ‘Customers’ are entered in exactly the same way as for the set ‘Plants’. The five elements are listed in Figure 4.2. Note that the last element ‘Den Bosch’ contains a blank character.

Elements of the set ‘Customers’

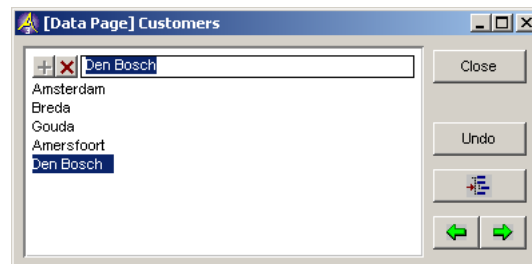


Figure 4.2: Data page for the set ‘Customers’

4.2 Entering parameter data

The data page of each indexed parameter is automatically filled with the elements of the corresponding sets. All that is left for you to do, is to enter the nonzero data values.

Empty tables

In order to enter the data for the parameter ‘Supply’, you should execute the following actions (which are similar to the ones described in the previous section):

Supply data


- ▶ open the attribute form of the parameter ‘Supply’,
- ▶ press the **Data** button ,
- ▶ move the mouse pointer to the first data field and click,
- ▶ enter the number 47,
- ▶ press the *Enter* key to register the first value,
- ▶ enter the number 63,
- ▶ press the *Enter* key to register the second value, and
- ▶ close the data page by pressing *Close* button.

Figure 4.3 shows the completed data page of the parameter ‘Supply’.

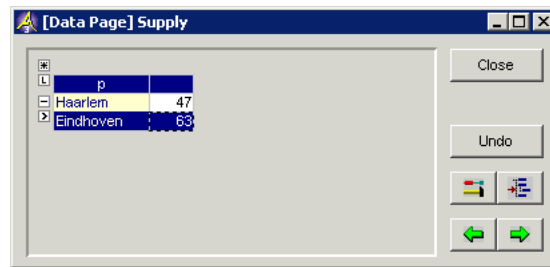


Figure 4.3: Data page for the parameter 'Supply'

The data values for the parameter 'Demand' are entered in exactly the same way as for the parameter 'Supply'. The five data values are listed in Figure 4.4. *Demand data*

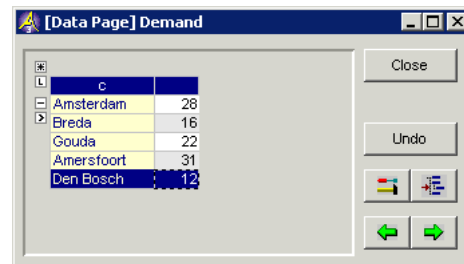


Figure 4.4: Data page for the parameter 'Demand'

The parameter 'UnitTransportCost' is two-dimensional, and requires you to complete a table. The completed data page for this parameter is shown in Figure 4.5. *Cost data*

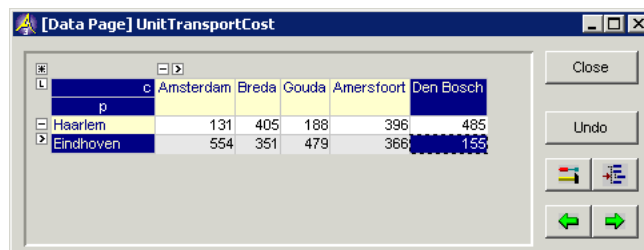


Figure 4.5: Data page for the parameter 'UnitTransportCost'

4.3 Saving your data

AIMMS has the option to store the data values of all identifiers in what is referred to as a 'case'. There are facilities both to save cases and to load cases.

Case management

In order to save the data that you just entered in a new case named 'Initial Beer Transport Data', you need to execute the following steps:

Saving a case

- ▶ go to the **Data** menu and execute the **Save Case** command,
- ▶ in the **Save Case** dialog box (see Figure 4.6) enter the name 'Initial Beer Transport Data' in the 'Name' field (without the quotes), and
- ▶ press the **Save** button to save your data.

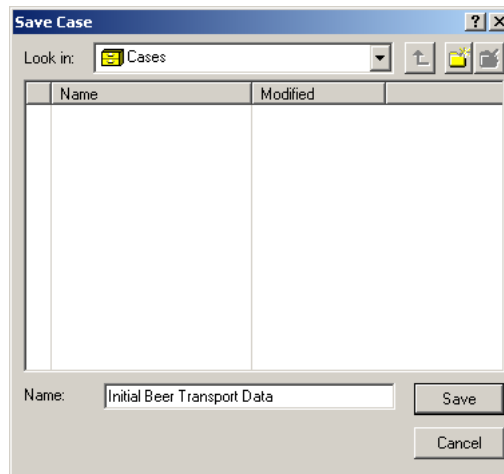


Figure 4.6: Save Case dialog box

If a project in AIMMS is closed and subsequently reopened, you may want to reload your data. You may even want AIMMS to load a specific case automatically each time your project is started. This can be accomplished (without programming) using the AIMMS **Options** dialog box illustrated in Figure 4.7.

Loading a case as the startup case

- ▶ go to the **Settings** menu and execute the **Project Options** command,
- ▶ select the **Project - Startup & Authorization** folder in the option tree,
- ▶ click on the Option **Startup Case** in the right-most window,
- ▶ press the wizard button,
 - ▶ select the case 'Initial Beer Transport Data',
 - ▶ press the **OK** button on the **Select Case** dialog box,
- ▶ press the *Apply* button on the AIMMS **Options** dialog box, and
- ▶ finish by pressing the *OK* button.

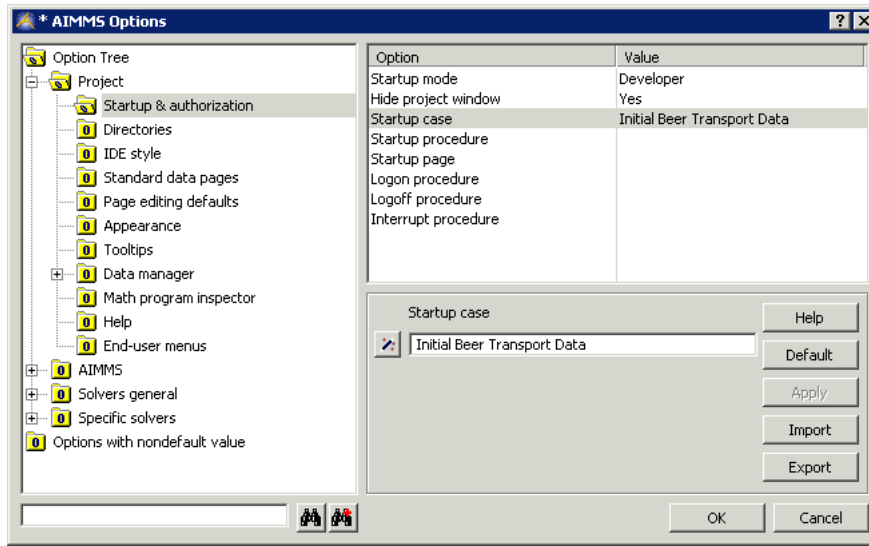



Figure 4.7: AIMMS options dialog box

It is a good habit to save your work regularly. The option settings above are also saved when you save the entire project. You can save the project by pressing the **Save Project** button . Note that saving a project does not mean that the data is also saved. Saving data requires you to save a case.

Saving your project

At any time during an AIMMS session you can load a case manually as follows:

Loading a case manually

- ▶ go to the **Data** menu, select the **Load Case** submenu and execute the **As Active...** command,
- ▶ select the desired case name in the **Load Case** dialog box (see Figure 4.8), and
- ▶ press the *Load* button.

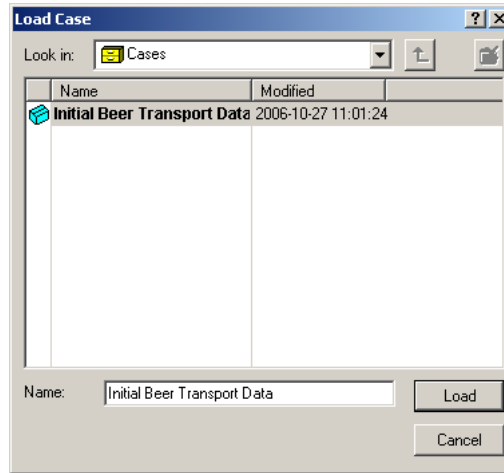


Figure 4.8: Load case dialog box